

Our Island Home: The People

Lesson 4: What is the population like in our island home?



Independent research links

<https://www.bbc.co.uk/bitesize/guides/zkg82hv/revision/1>
<https://www.bbc.co.uk/bitesize/guides/zkg82hv/revision/2>



Video links

<https://www.youtube.com/watch?v=5xiWffYFJE8>
https://www.youtube.com/watch?v=vMCaXvKkq_o



Task 1 & 2- Use your own knowledge to create a mind map showing what you already know about the UK's population. Now watch the first video about the UK's demographics (details about population) and add what you learn from the video to your mind map.



Task 3- Using the second video link, write down what has caused the UK's population to rise over time.



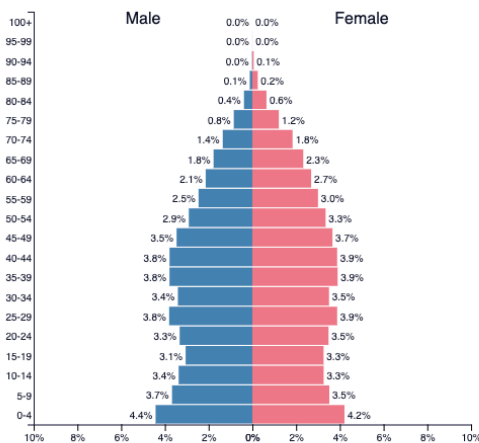
Task 4- Read over the two independent research links about population in the UK. Below, write down 5 facts about the UK's population you have learnt from your reading.



Task 5- Now, watch this [video](#) that explains what population pyramids show about a country's population. Next, look at the population pyramids below for the UK in 1950 and the UK today.

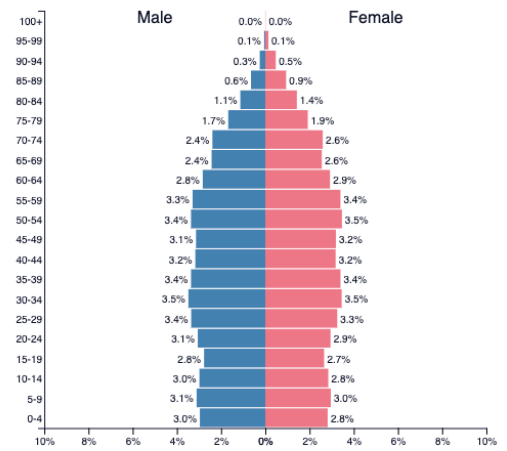
Graph 1:

United Kingdom ▼
 1950
 Population: 50,616,019



Graph 2:

United Kingdom ▼
 2020
 Population: 67,886,004



Task 6- Compare the two population pyramids – what has changed over time?

Rural and Urban Differences



Lesson 5: Why do people choose to live in different places in the UK?



Independent research links

<https://www.bbc.co.uk/bitesize/guides/zw4j6sg/revision/1>
<https://www.bbc.co.uk/bitesize/guides/z2dmn39/revision/2>



Video links

<https://www.youtube.com/watch?v=FXmOJ-fYMyc>



Rural is about the countryside rather than the town.
Urban is about the characteristic of a town or city.

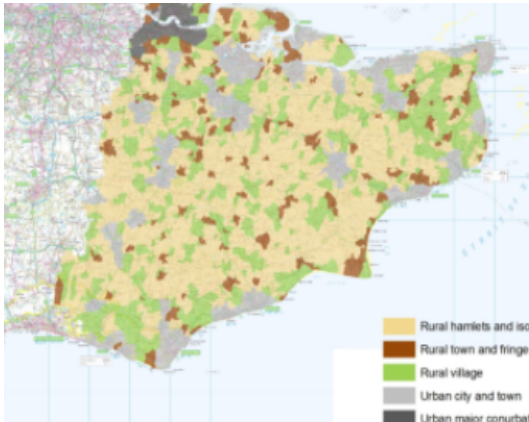


Task 1: Using the links above, complete the below table with all the key differences between rural and urban locations in the UK.

Rural Places	Urban Places



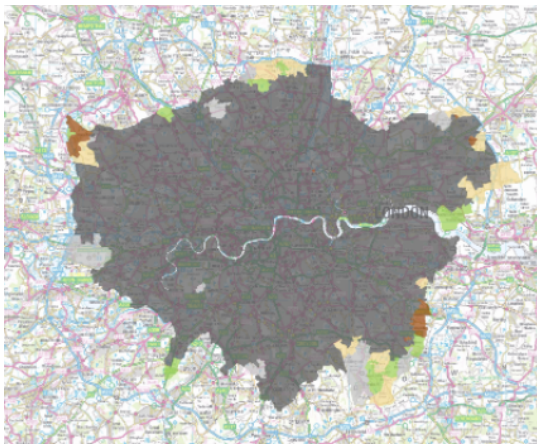
Task 2: Study the two maps showing Kent and London and how rural or urban the two locations are.



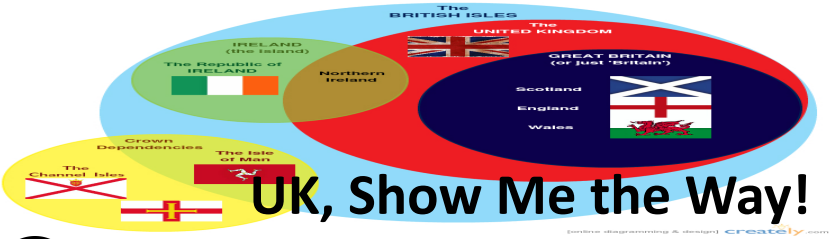
- Rural hamlets and isolated dwellings
- Rural hamlets and isolated dwellings in a sparse setting
- Rural town and fringe
- Rural town and fringe in a sparse setting
- Rural village
- Rural village in a sparse setting
- Urban city and town
- Urban city and town in a sparse setting
- Urban major conurbation



Task 3: Using the maps, delete the incorrect way of describing each location – using the key above to help guide your choices. The first one has been done for you.



Kent is a rural/ ████████ county, whereas London is a rural/urban county. There are many rural hamlets and isolated dwellings/rural villages in a sparse setting in Kent/London. London is an urban major conurbation/urban city and town. The population is larger in Kent/London.



Lesson 6: What are the UK, Great Britain and the British Isles?

Video links
<https://www.youtube.com/watch?v=uJ1mg6vikvs>
<https://www.youtube.com/watch?v=GlevycT-ciM>

Task 1 – Read over this link from [BBC Bitesize](https://www.bbc.com/news/uk-51888888) about the United Kingdom. Summarise below what the video tells you about the UK.

Task 2 – Watch the video above about the differences between the UK, Great Britain and the British Isles. Below, mind map what the differences are between these different locations. You can sketch map each location if you like to help.

Task 3 – Watch the second video above showing Donald Trump getting it wrong when talking about the UK. Write him three simple sentences to help him understand the differences between the UK, Great Britain and England.

Plenary – What is your favourite fact (s) you have learnt about the UK from the last three lessons?